

# Disney's Animal Kingdom

## attractions

- Pangani Forest Exploration Trail** – Enjoy surprises around every turn, from gorillas to underwater hippos.
- Kilimanjaro Safaris** – Set off on safari across 110 acres of rolling African-style savannah filled with freely roaming animals. **FP**
- Wildlife Express Train** – Hop a rustic train to *Rafiki's Planet Watch*. After exploring, reboard for a trip straight back to Africa.
- Maharajah Jungle Trek** – Venture through winding paths where tigers prowl, giant bats fly and real dragons live.
- The Boneyard** – A play maze built around the fun fossil remains of Triceratops, T-Rex, and other vanished giants. You can even dig up the bones of a woolly mammoth.
- TriceraTop Spin** – Fly the skies on a friendly Triceratops.

## entertainment

- Festival of the Lion King** – Be part of the show along with Timon, Simba and all their pals in this breathtaking, fun-filled celebration of the circle of life. Theater does become dark at times with occasional loud noises. **!**
- Mickey's Jammin' Jungle Parade** – See some favorite Disney pals on a crazy caravan of fun. See parade route on map. **.....**
- Flights of Wonder** – Let your imagination take flight as birds of all kinds astound you.
- Finding Nemo—The Musical** – Join Nemo and pals for this amazing stage show that features original music, mesmerizing puppetry and incredible performances. Inspired by Disney·Pixar's "Finding Nemo."

## characters

- Camp Minnie-Mickey** – A great place to Meet Mickey, Minnie and more of your favorite Disney pals.
- Discovery Island** – Meet some of your favorite Disney Characters.
- Rafiki's Planet Watch** – Rafiki from *The Lion King* will be on hand for pictures and autographs.



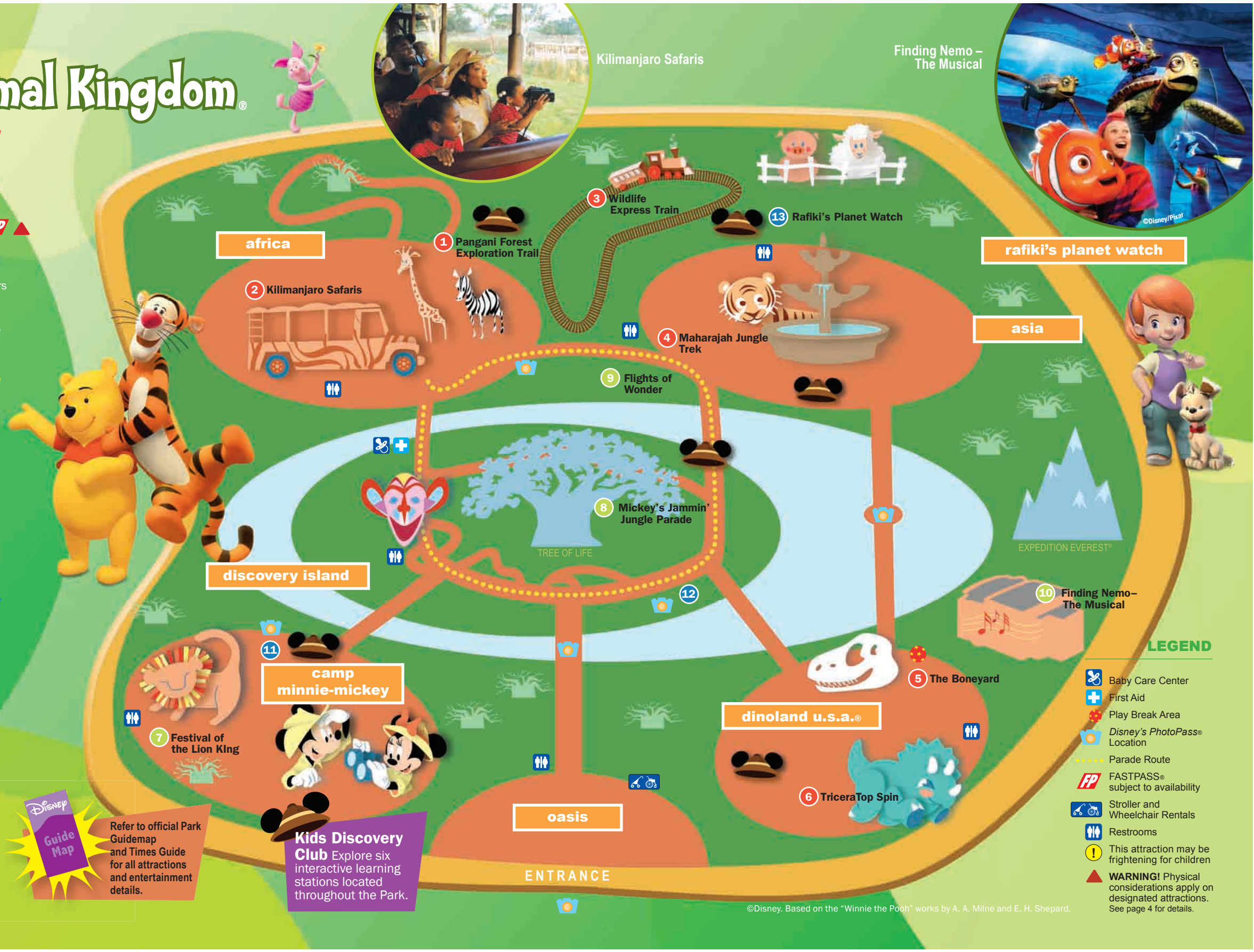
Strike Up the Band! Now on DVD

11



Refer to official Park Guidemap and Times Guide for all attractions and entertainment details.

**Kids Discovery Club** Explore six interactive learning stations located throughout the Park.



## LEGEND

- Baby Care Center
- First Aid
- Play Break Area
- Disney's PhotoPass Location
- Parade Route
- FASTPASS subject to availability
- Stroller and Wheelchair Rentals
- Restrooms
- !** This attraction may be frightening for children
- ▲** **WARNING!** Physical considerations apply on designated attractions. See page 4 for details.

©Disney. Based on the "Winnie the Pooh" works by A. A. Milne and E. H. Shepard.